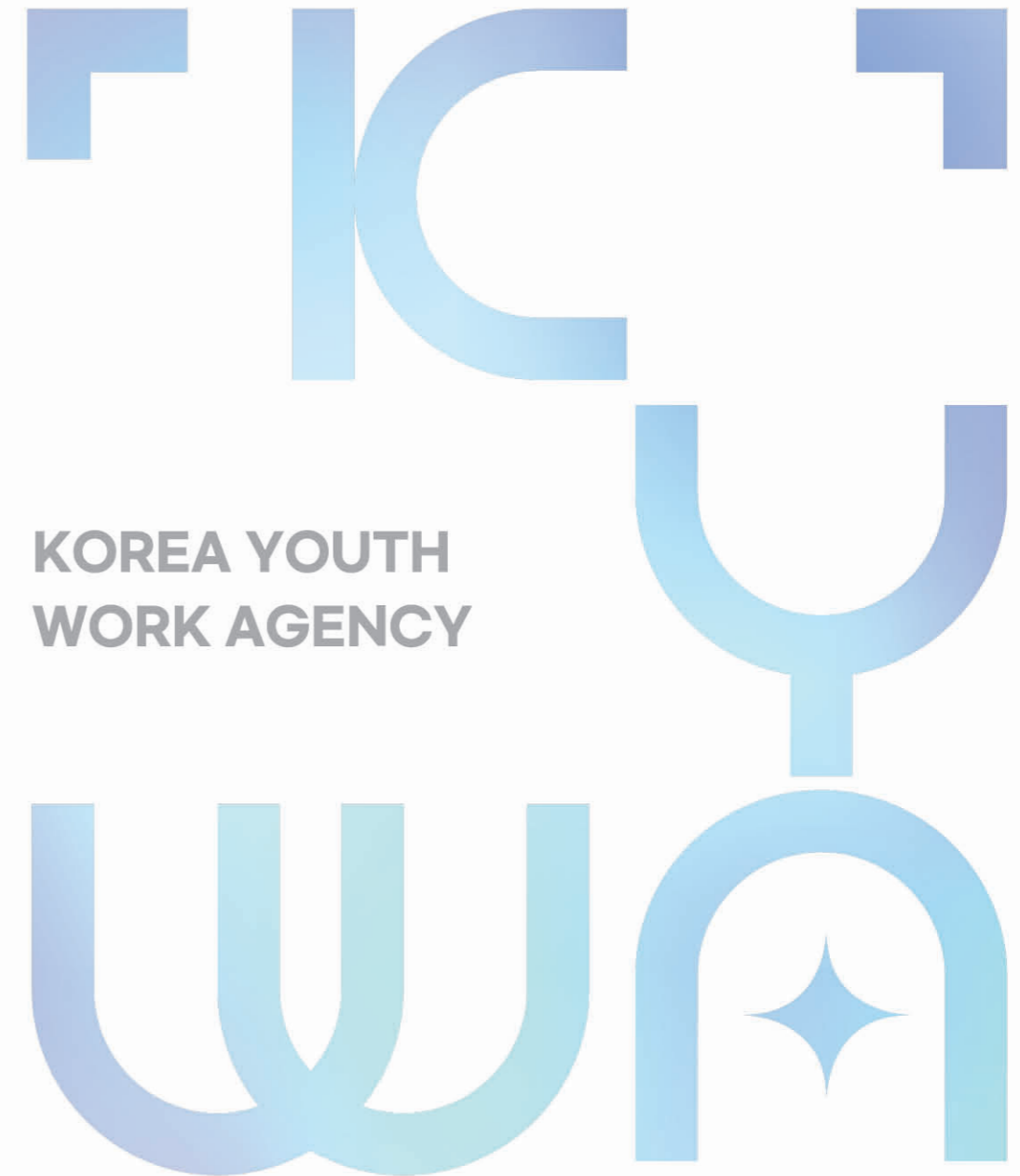




This print uses eco-friendly paper, manufactured without the use of harmful chemicals such as chlorine bleach and fluorescent dyes.



Address 47, Gyeonggidaero, Seodaemungu, Seoul, 03752  
TEL 02-330-2800  
Home Page www.kywa.or.kr

Facebook www.facebook.com/kywa0924  
YouTube www.youtube.com/kywa2010



## CONTENTS

- 4 Mission, Vision and Core Value
- 6 Major Projects
  - Empowering youth participation and initiative
  - Providing national youth facilities and public services
  - Developing professional youth workers
  - Ensuring safety in youth activities
- 18 Social Value and Organizational Culture
- 19 History and Contacts



KYWA is a public agency that provides comprehensive support for youth activities essential to their balanced growth. It stands alongside young people as they shape their futures and grow into capable, confident individuals.



## KOREA YOUTH WORK AGENCY

### Legal Basis for Establishment

Article 6 of the Youth Activities Promotion Act  
(The establishment of the Korea Youth Work Agency)

### Purpose of establishment

The organization aims to enhance the quality of life of youth by providing comprehensive support for activities that promote their balanced growth and development. (Article 3)

### Main Roles

- Promotion of diverse and creative experiential activities for youth
- Commissioned operation of youth training facilities and training, education, and exchange of youth workers
- Promotion of youth volunteer activities and domestic and international youth exchange activities
- Development, dissemination, evaluation, and pilot operation of youth activity programs
- Support for comprehensive safety and hygiene inspections of youth training facilities, and provision of safety-related education, consulting, and publicity
- Commissioned management and support of youth policy projects by the Ministry of Gender Equality and Family

Empowering youth participation and initiative

# Supporting Youth Competency Development

\* KYWA supports a broad range of youth activities that empower young people to independently navigate real-life challenges and career concerns in a rapidly changing society, fostering their balanced and holistic development.

## Youth Activities Based on Competencies

KYWA assists in developing and operating activities based on the seven core competencies of youth work, and validate the effectiveness of these programs.

*Youth Activities Based on Competencies* | Designing and implementing programs with a focus on enhancing and applying youth competencies

## Youth-Led Project Activities (PBL)

KYWA promotes the expansion of youth activities grounded in Project-Based Learning(PBL), an approach where young people take the lead in driving projects. It also disseminates its self-developed 'KYWA-Style PBL' model to youth organizations and facilities, actively supporting its implementation in the field.

*KYWA-Style PBL* | A youth-centered, youth-led activity model developed by KYWA, designed to systematically cultivate the seven core competencies of youth by addressing complex and challenging issues(challenge questions) closely related to their own lives.

## National Youth Assembly

The National Youth Assembly is a policy participation body where youth directly propose policies from their own perspective. It has been organized and operated annually since 2005 in accordance with Article 2 of the Youth Framework Act. The Assembly consists of youth members recommended by 17 metropolitan and provincial governments and selected through open recruitment, along with youth experts. Youth take the lead in identifying policy agendas and proposing them to the government.

### Core Competencies for Youth Activities

Core Competencies	Definition
Critical Thinking	The ability to view problems from a new perspective in accordance with the subject and principles
Communication	The ability to communicate with others, which is needed to share thoughts, questions, ideas, and solutions
Collaboration	The ability to put together the talents and expertise of people towards a single common goal
Creativity	The ability to approach conventional things in a new way as if innovating or inventing something
Social sentiment	The ability to precisely recognize emotions in oneself and others, manage one's own uncomfortable emotions, and positively resolve conflicts with others
Career Development	The ability to flexibly adapt to the rapidly changing career landscape throughout life, to develop a unique identity based on one's interests and aptitudes, and to independently and creatively explore, design, and pursue one's career path
Digital Literacy	<b>Utilizing Digital Tools</b> The ability to effectively select and utilize digital tools according to specific needs and purposes
	<b>Organizing and Creating Information</b> The ability to selectively recognize relevant information or creatively generate new forms of information to solve problems
	<b>Analyzing and Evaluating Information Data</b> The ability to critically analyze, compare, and evaluate digital information and data based on their reliability and relevance
<b>Digital Safety</b> The ability to protect oneself and others in digital environments, and to use digital devices and services safely and responsibly	

### Composition and Operational Framework of the 2025 National Youth Assembly

Empowering youth participation and initiative

## Youth Award Program

Participants independently set and carry out activity content, goals, and detailed plans across various areas—such as self-development, physical training, volunteering, exploration, and residential activities(if applicable)—according to the Gold, Silver, and Bronze levels.

Through this process, youth develop their potential and acquire essential competencies for life.

*The Duke of Edinburgh's International Award, Korea* | Operated in over 130 countries worldwide for youth aged 14 to 24(introduced and implemented in Korea in 2008)

*Youth Self-Challenge Award Program* | Korean-style award program developed in 2010, based on the International Award for younger youth aged 7 to 15(Implemented since 2014)

## Youth Volunteering

KYWA operates various initiatives to enable youth to participate autonomously and proactively in volunteer activities within their communities, including the development and dissemination of programs and the training of leaders. KYWA also operates DoVol, a comprehensive youth volunteering platform, where youth can easily search for vol-

unteer opportunities, apply, track participation records, and print certificates all in one place. In addition, KYWA plans and operates 'Youth×Social Eco-V', a convergence-type volunteer program that combines environmental themes with social economy and career exploration, further strengthening connections with educational institutions.

## Youth International Exchange

KYWA supports youth in developing into future talents equipped with core competencies for the era of globalization. Through exchange and collaboration with youth from diverse cultural backgrounds, participants learn the values of mutual understanding and respect, and foster the sensitivity and inclusiveness necessary to become global citizens. These activities enhance youth understanding of the SDGs of the international community and help them cultivate creative problem-solving skills and global leadership. Exchange programs led by K-Youth strengthen solidarity with the international community and provide opportunities for youth to grow as global leaders who practice the values of diversity and coexistence.

### Youth Participation in Award Programs

(Unit: Persons)

#### International Award

Participating Youth	28,999
Awarded Youth	6,809
Gold	110
Silver	1,050
Bronze	5,649

#### Youth Self-Challenge Award Program

Participating Youth	26,255
Awarded Youth	15,960
Gold	1,169
Silver	3,339
Bronze	10,900
Others	552

※ As of 2024 (Cumulative)

### Effectiveness of International Exchange Participation

(As of 2024)

Before (Before) | After (After)

Category	Before	After
Understanding Between Nations	3.96	4.74
Enhancement of Global Competency (Values)	4.58	4.86
Global Citizenship Awareness	4.33	4.65
<b>Multicultural Acceptance</b>		
Cultural Openness	4.19	4.70
Improvement in Avoidance/Refusal Emotions	4.40	4.54
Willingness to Engage in Global Citizenship Actions	4.50	4.81

Empowering youth participation and initiative

# Supporting Balanced Growth of Youth

\* KYWA strengthens a community-based support system and promotes the discovery and dissemination of outstanding youth activities to ensure the balanced growth of youth across the country.

## Region-Based Youth Activities

KYWA supports the discovery and linkage of youth activity resources to revitalize community-centered youth activities. Through the youth activity policy delivery system centered on 17 metropolitan and provincial governments nationwide, KYWA establishes a region-based youth growth support system. In addition, KYWA promotes youth participation by supporting the operation of youth activities that reflect the unique characteristics of each region.

## Support Project for Outstanding Youth Activity Programs

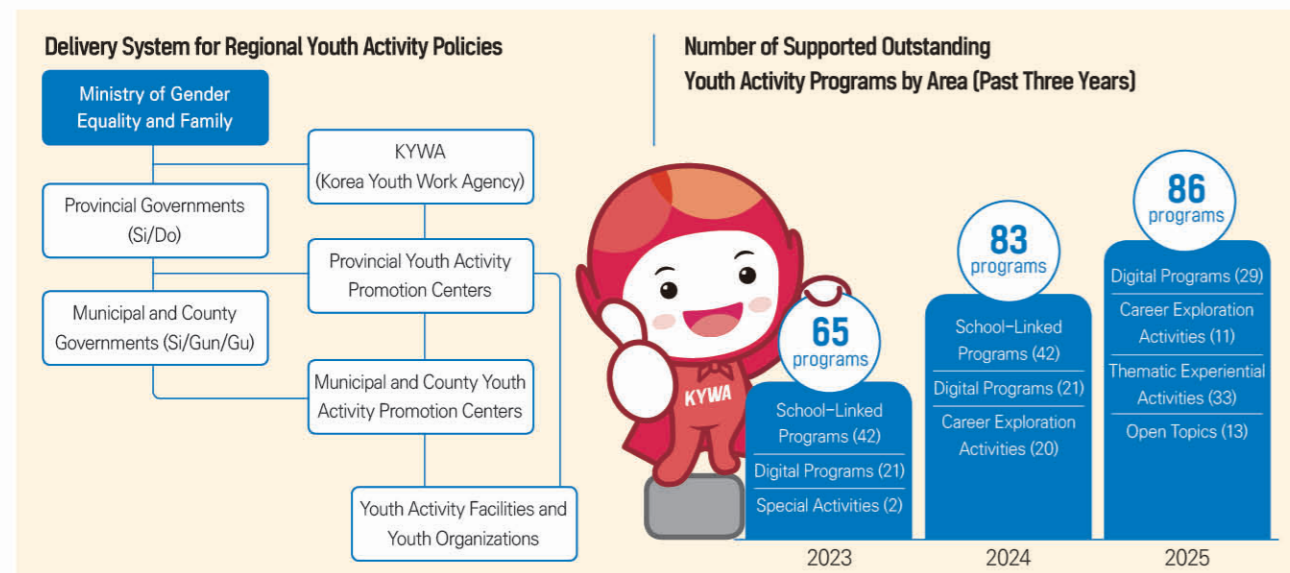
In line with the task of revitalizing youth activities under the 7th Basic Plan for Youth Policy, KYWA selects and supports outstanding youth activity programs operated by youth training facilities nationwide to strengthen digital competencies, enhance future capabilities, expand diverse experiential activities, and promote youth activities linked inside and outside of schools. KYWA also shares and disseminates the operational out-

comes with other facilities and related organizations to enable youth across the country to experience outstanding programs.

## Youth Board Member System

KYWA operates the Youth Board Member System, the first of its kind among public institutions, allowing youth to directly participate in the organization's governance. One youth board member, the chairperson of the National Youth Special Assembly, is appointed and serves as an ex officio member of KYWA's board of directors, which consists of up to 15 members.

The youth board member participates in deliberation and decision-making on major management issues, including the review of business plans and budgets and settlements, enactment and revision of regulations, and appointment and dismissal of executives. As a substantial stakeholder and demand-side representative in youth policy, the youth board member also provides opinions across the organization's projects to help realize social values through various youth programs.



Empowering youth participation and initiative

\* KYWA supports youth across the country in participating in community-based care and activities inside and outside of school.

## Youth After-School Academy

KYWA provides comprehensive services—including meals, transportation support, counseling, career exploration, and specialized experiential activities—for youth (from 4th grade of elementary school to 3rd grade of middle school) who require care after school hours. Through the Youth After-School Academy, youth are offered a safe care environment and diverse activity opportunities, contributing to the reduction of private education expenses and the alleviation of caregiving burdens. The program operates in two types: General and Weekend.

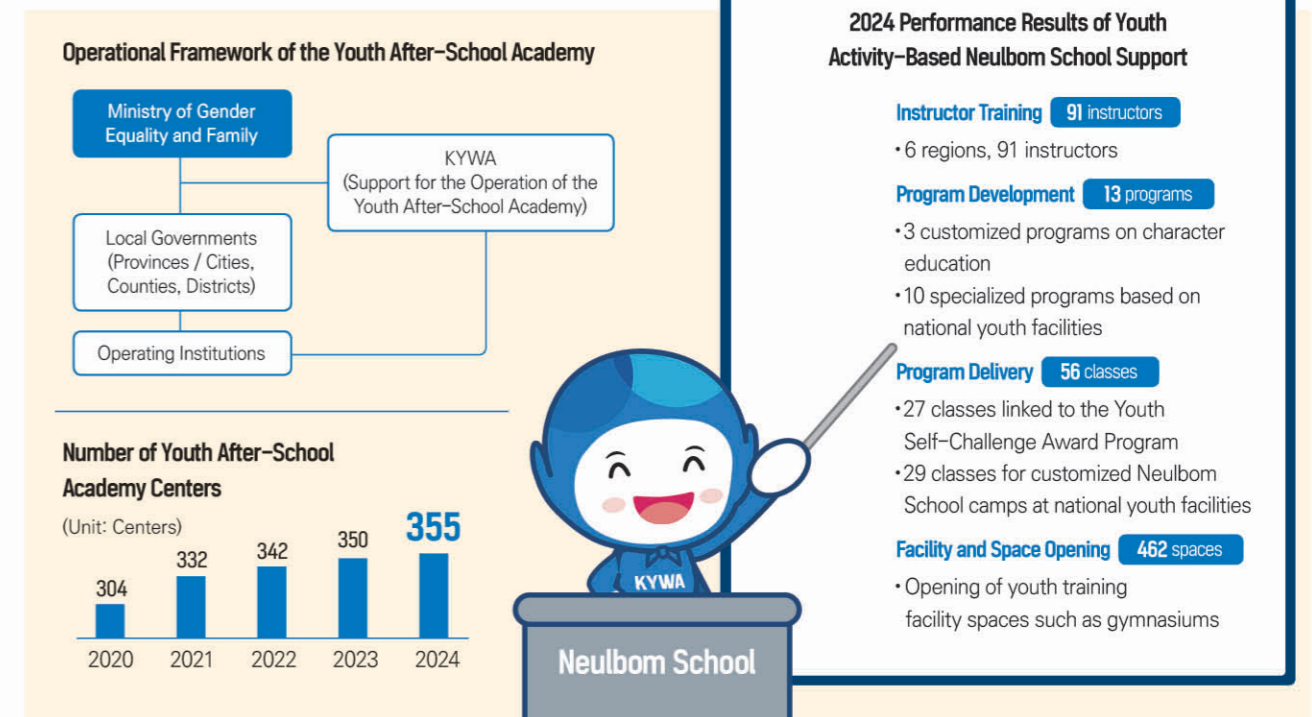
The General Program targets youth in need of after-school care, such as recipients of basic livelihood benefits, near-poor households, and youth from single-parent, multicultural, or dual-income families, selected through school and community recommendations. The Weekend Program is

available to all youth who require weekend care and experiential activities.

## "Neulbom School" Support Project

As part of the implementation of the "Strengthening Support for Youth Activities Inside and Outside of School" task under the 7th Basic Plan for Youth Policy, KYWA supports youth care and activity revitalization in connection with the Ministry of Education's "Neulbom School" initiative, which is scheduled to expand to all grades by 2026.

KYWA develops activity programs for younger youth and selects and trains instructors from holders of the national youth worker certification, dispatching them as Neulbom School instructors to strengthen support for youth activities both inside and outside of schools.



Empowering youth participation and initiative

## Enhancement of the Value of Youth Activity Information

\* KYWA operates the Youth Activity Information Service(e-Youth) and manages big data to support youth in designing their own lives by utilizing a wide range of information related to youth activities, welfare, and protection.

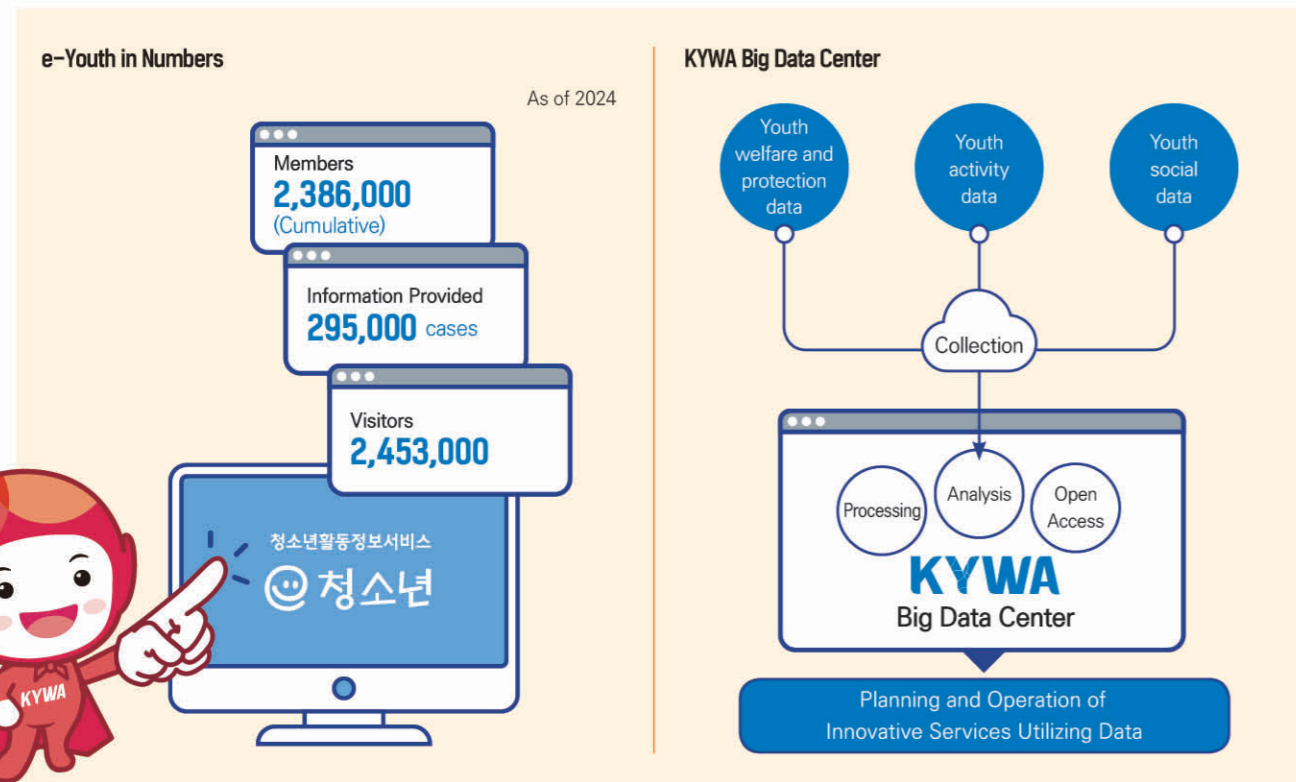
### Youth Activity Information Service, e-Youth

KYWA provides a wide range of information to support the healthy development of youth, including details on activity programs offered by youth training facilities, public and private institutions—such as experiential activities, volunteer opportunities, international exchanges, nationally certified youth activities, and programs linked to the Free Semester System—as well as information on youth welfare and protection, including youth counseling and youth sexual protection. Youth can access personalized information service on e-Youth via PC or mobile devices.

### Management of Big Data on Youth Activities and Planning and Operation of Innovative Services

KYWA collects, processes, analyzes, and makes youth-related data publicly available, and integrates it with data from various fields. KYWA plans and operates innovative services utilizing data, such as enhancing safety at public youth facilities and supporting the development of customized youth programs.

Status of Youth Sector Data Disclosure | Total: 154 datasets (as of 2024)



Provide national youth facilities and public services

## Enhancing Service Quality at National Youth Facilities

\* National youth facilities provide opportunities for young people to engage in experiences related to history and culture, explore nature and space, investigate life and the ocean, and understand the importance of the environment.

### Support for Youth Training Activities

KYWA offers differentiated activity programs tailored to the developmental characteristics and growth stages of youth, fostering their balanced growth through participation in hands-on, experiential activities.

### Support for Youth from Vulnerable Groups

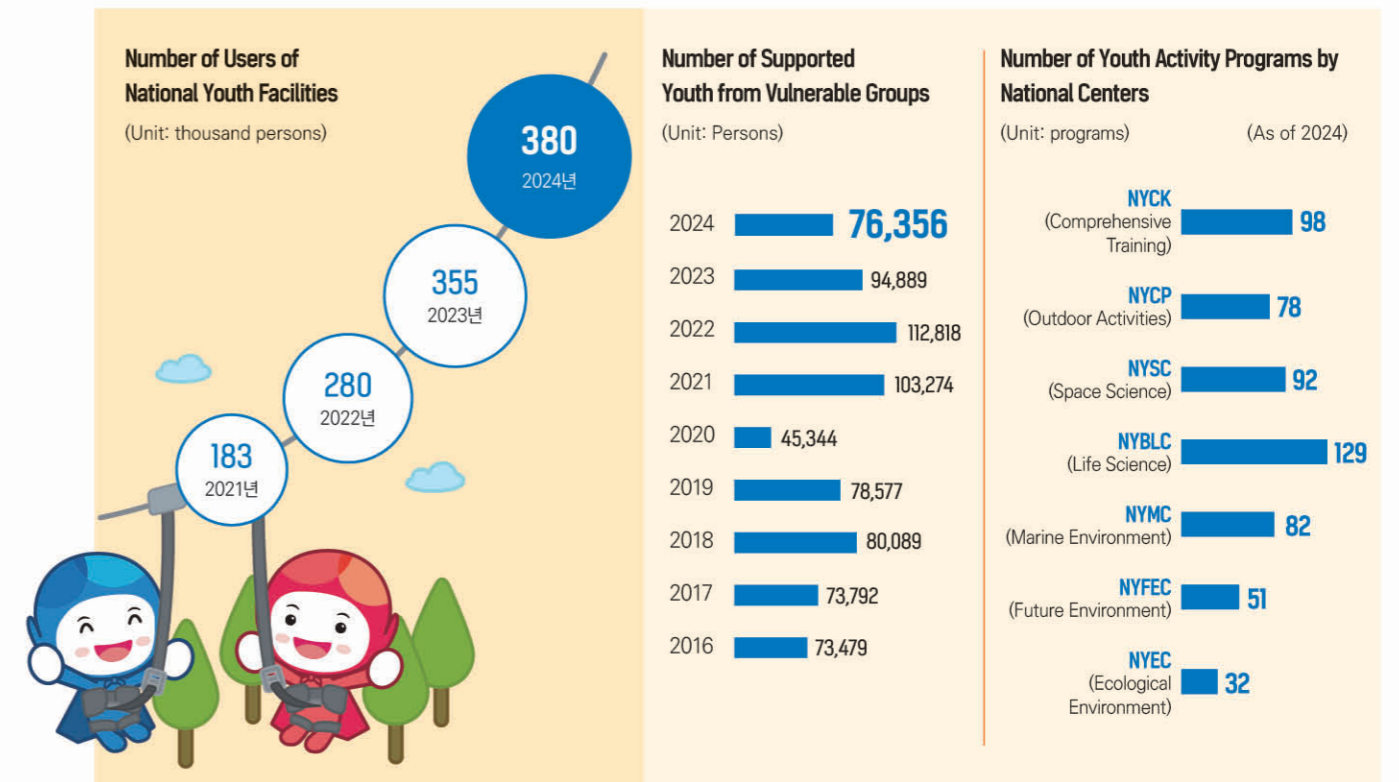
KYWA ensures participation opportunities for marginalized youth who face barriers to education, culture, and welfare due to mental, physical, or environmental factors, offering a range of inclusive activities.

### Provision of Specialized Activities

KYWA offers theme-based and field-specific specialized programs in areas such as space science, life science, marine science, future environment, and ecology to enhance the potential capabilities of youth.

### Program Development and Dissemination

KYWA develops new programs leveraging the expertise of national youth facilities, reflecting changes in the social environment, youth developmental characteristics, and government policies. Additionally, KYWA identifies exceptional programs currently operating at national youth facilities and disseminates them nationwide to foster collaborative growth with local youth centers.



## Providing national youth facilities and public services

**National Youth Center of Korea**

- A comprehensive youth training facility located in Cheonan, Chungcheongnam-do
- Equipped with various facilities such as a main auditorium, lecture rooms, pottery studio, folk culture center, international exchange center, and outdoor performance hall; operates 98 programs for comprehensive training and historical and cultural experiences
- Supports youth in growing into well-rounded individuals equipped with knowledge, virtue, and physical strength through comprehensive training activities

Opened: August 15, 2001

Site Area | 540,641m<sup>2</sup> Total Floor Area | 35,401m<sup>2</sup> Residential Capacity | 772 persons

**National Youth Center of Pyeongchang**

- A comprehensive outdoor activity center located in Pyeongchang, Gangwon-do, surrounded by pristine natural environments
- Operates 78 programs for nature and outdoor activities, including forest experiences, trekking, challenge activities, and descending sports
- Supports youth in establishing correct values regarding the natural environment and fostering a sense of community living

Opened: November 14, 1998

Site Area | 483,818m<sup>2</sup> Total Floor Area | 22,348m<sup>2</sup> Residential Capacity | 346 persons

**National Youth Space Center**

- A specialized experiential facility for youth space science activities located in Goheung, Jeollanam-do
- Equipped with facilities such as a planetarium, Deokheung Observatory, and an activity center; operates 86 experimental programs in the fields of astronomy, physics, and aerospace science
- Supports youth in developing the competencies needed to prepare for the space era with a cosmic perspective

Opened: July 9, 2010

Site Area | 320,757m<sup>2</sup> Total Floor Area | 13,711m<sup>2</sup> Residential Capacity | 226 persons

**National Youth Bio-Life Center**

- A specialized experiential facility for youth bio and life sciences located in Gimje, Jeollabuk-do
- Equipped with facilities such as the Convergence Laboratory, Food Laboratory, Development Laboratory, and a 42-meter Horizon Observatory; operates 124 experimental programs in the bio and life science fields, including Red Bio, Green Bio, White Bio, and general experience programs
- Supports youth in recognizing the value of life, fostering scientific inquiry, and growing into creative talents

Opened: July 1, 2013

Site Area | 38,806m<sup>2</sup> Total Floor Area | 11,907m<sup>2</sup> Residential Capacity | 308 persons

## Providing national youth facilities and public services

**National Youth Ocean Center**

- A specialized experiential facility for youth marine activities located in Yeongdeok, Gyeongsangbuk-do
- Equipped with facilities such as the Marine Experience Hall (Ship Simulation Room, Polar Research Room, and Marine Safety Course); operates 95 marine experience programs across four areas: marine science, marine environment, marine safety, and marine culture
- Supports youth in recognizing the value of the ocean and in growing into creative and adventurous talents

Opened: July 1, 2013

Site Area | 50,169m<sup>2</sup> Total Floor Area | 13,664m<sup>2</sup> Residential Capacity | 285 persons

**National Youth Future Environment Center**

- A specialized experiential facility located in Bonghwa, Gyeongsangbuk-do, themed around a sustainable future environment
- Equipped with facilities such as the Forest Green Road, Environmental Laboratory, and Resource Circulation Room; developed and operates 51 programs based on key themes linked to the SDGs, including conservation of terrestrial ecosystems, climate change and response, responsible production and consumption, and addressing universal humanitarian issues
- Supports youth in preparing for the future society and growing into future core talents

Opened: July 21, 2022

Site Area | 104,361m<sup>2</sup> Total Floor Area | 8,572m<sup>2</sup> Residential Capacity | 162 persons

**National Youth Ecology Center**

- A youth ecological activity center located in Eulsukdo, Busan Metropolitan City
- Equipped with specialized experiential facilities such as an ecology theater, ecology experience rooms, media exhibition rooms, and laboratories for plants, birds, and insects; developed 32 ecological programs across four themes: ecological experience, ecological inquiry, ecological sensitivity, and ecological practice
- Supports youth in recognizing the importance of nature and the ecological environment and in fostering empathetic attitudes toward the natural environment through youth-led ecological activities

Opened: July 11, 2024

Site Area | 64,710m<sup>2</sup> Total Floor Area | 10,691m<sup>2</sup> Residential Capacity | 124 persons

Developing professional youth workers

# Enhancing the Expertise of Youth Workers

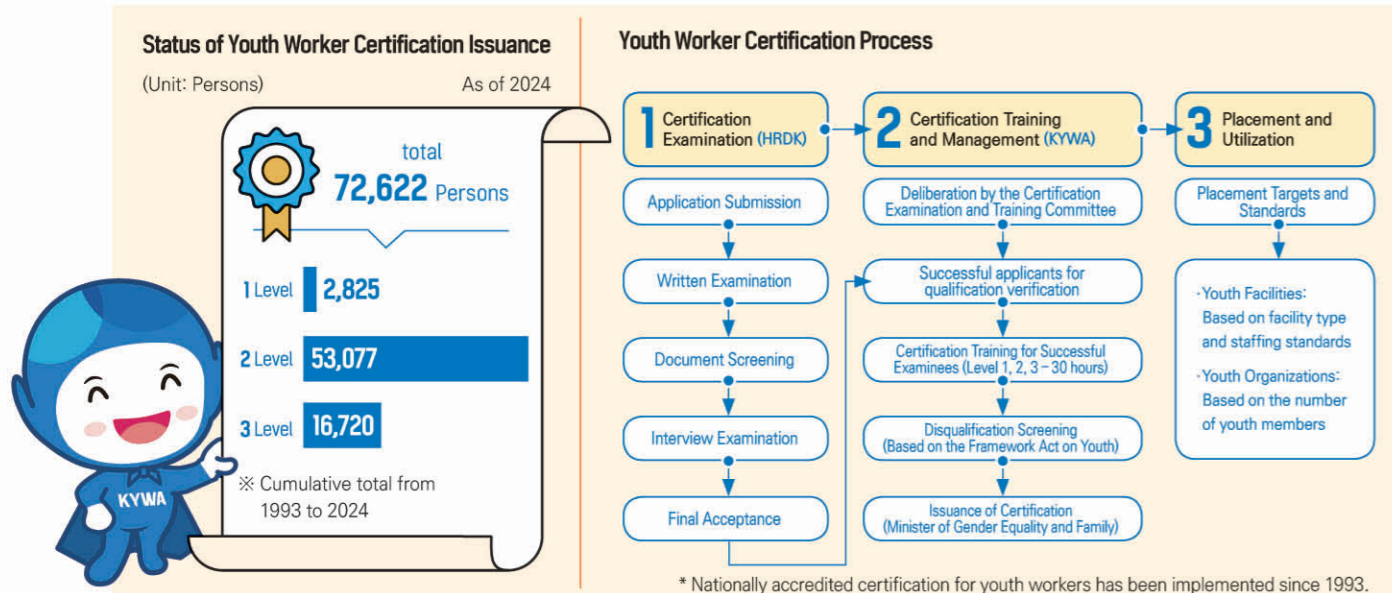
\* The Youth Growth Center supports educational programs for the development and competency enhancement of youth workers.

## Development of Youth Workers

KYWA operates the national youth worker certification system to cultivate professional personnel in the youth sector. KYWA organizes and operates the Certification Examination and Training Committee to ensure the fairness and professionalism of the certification system. Through a structured training process, KYWA fosters the qualifications and competencies necessary for youth workers. As a result, KYWA continuously produces youth workers equipped with the expertise and practical skills required in the field.

## Mandatory Introduction of Field Practicum at Youth Organizations

In accordance with the amendment to the Enforcement Decree of the Framework Act on Youth, KYWA operates the newly established 'Field Practicum at Youth Organizations' course as part of the Level 2 Youth Worker Certification examination subjects. The program systematically provides field-based practicum training to strengthen the practical competencies of youth workers and supports the accumulation of field experience during the certification process.



## Subjects and Methods for Youth Worker Certification Examinations

Certification	Subjects by Level(New Subject Added for Level 2)	Certification Methods(Revised)	
Level 1 (5 Subjects)	Youth Research Methodology, Youth Rights and Participation, Youth Policy, Youth Organization Management, Youth Leadership	Written Examination (Subjective and Objective Questions)*	Objective-Type Written Examination
Level 2 (8 → 9 Subjects)	Youth Development Systems, Youth Guidance Methods, Youth Psychology and Counseling, Youth Culture, Youth Activities, Youth Welfare, Youth Program Development and Evaluation, Youth Issues and Protection, (New) Field Practicum at Youth Organizations (130 hours)	Objective-Type Written Examination and Interview(Interview waived for holders of Level 3 certification)	Document Screening

\* If applicants have completed the required certification subjects as major courses at a university or equivalent institution, the written examination may be waived. (Revised on March 18, 2005)

Developing professional youth workers

## Refresher Training for Youth Workers

KYWA operates refresher training for youth workers in accordance with Article 24-2 of the Framework Act on Youth to continuously strengthen the professional competencies of youth workers and support educational capabilities that align with societal changes. The training is mandatory for those holding youth worker certifications and engaged in youth activities or support services at youth facilities and organizations. Participants are required to complete at least 15 hours of training every two years.

- Foundational education on youth policy, environmental changes, and essential competencies required in the youth field
- Specialized training courses for youth workers by role (institution managers, middle managers, field practitioners)

## National HRD Consortium Government Strategic Program

KYWA was designated as a Joint Training Center for the Government Strategic Program under the National HRD Consortium by the Ministry of Employment and Labor in March 2022. KYWA has signed agreements with 165 institutions in the youth activity field and provides free professional training to enhance the job competencies of youth workers.

## Operation of the Youth Worker Integrated Information System (Online Training Center)

KYWA operates the Youth Worker Integrated Information System(Online Training Center) to support the competency development of youth workers. Through the Online Training Center, KYWA provides various educational programs, including mandatory legal training and microlearning courses, on an ongoing basis, and manages training records and information through an integrated, customized platform.



## Safety in Youth Activities

\* KYWA supports youth in fully realizing their dreams and talents through safe and trusted youth activities.

### Comprehensive Safety and Sanitation Inspections of Youth Facilities

In accordance with Article 18-3 of the Youth Activity Promotion Act, KYWA conducts comprehensive inspections covering safety management aspects of youth facilities nationwide. The inspections encompass all areas including architecture, civil engineering, mechanical systems, electricity, firefighting, gas, sanitation, and adventure facilities. The results of the inspections are made publicly available.

### Safety Consulting for Youth Activities

To strengthen the safety management capabilities of youth activity facilities and to create a safer environment for youth activities, KYWA provides on-site safety consulting services. Specialized consultants in fields such as architecture, civil engineering, mechanical systems, gas, electricity, firefighting, sanitation, and adventure facilities visit the sites to conduct safety inspections and propose improvement measures.

### Safety Support Projects for Youth Activities

To prevent disasters and accidents at youth facilities and to ensure the safety of youth activity sites, KYWA operates initiatives such as the “Youth Training Facility Safety Enhancement Project.”

### Safety Education for Youth Activities

To strengthen the safety management capabilities of staff at youth activity facilities and to prevent accidents, KYWA provides safety education through on-site visits and online sessions. The training targets youth leaders, participants, and other stakeholders.

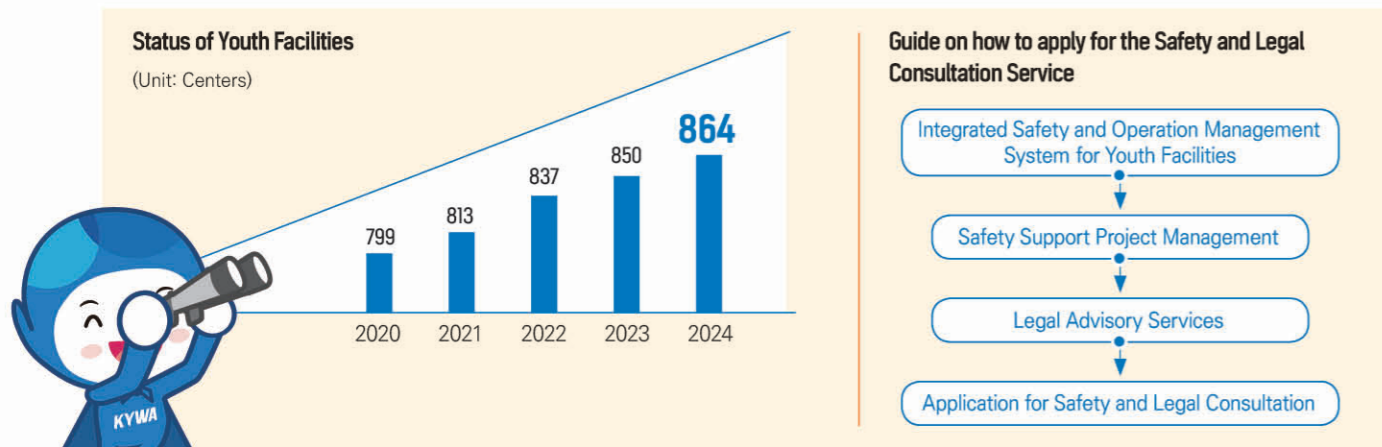
### Promoting a Culture of Safety in Youth Activities

KYWA is working to create a safe environment for youth participation and to establish and promote a culture of safety across all youth activities.

To this end, KYWA operates youth safety promotion groups, host contests, and run campaigns. Additionally, KYWA provides safety information tailored to specific occasions and emerging issues to help prevent accidents.

### Safety and Legal Consultation Service for Youth Activities

Professional attorneys provide safety and legal consultation services regarding various safety accidents and legal disputes that may arise during youth activities.



### Youth Activity Certification System

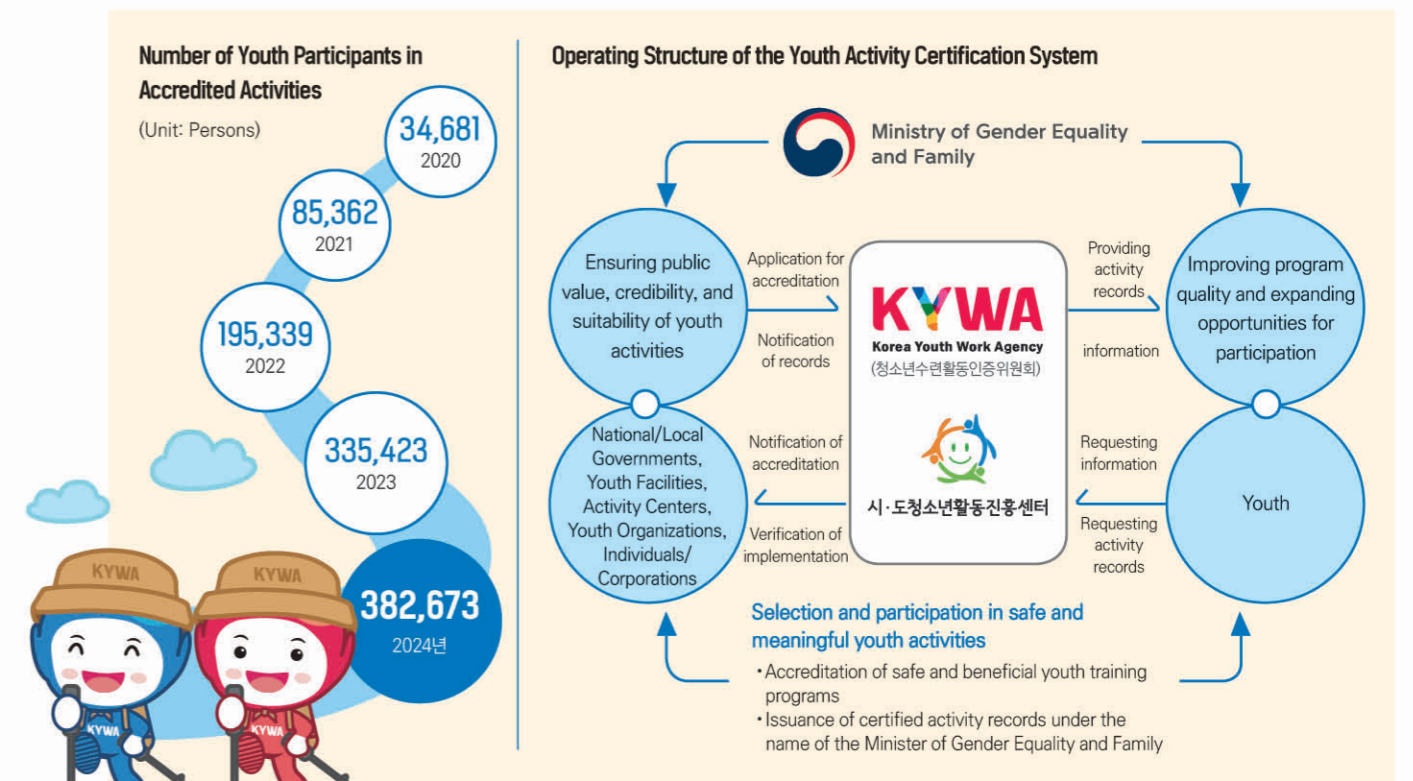
The Youth Activity Certification System, established under Article 35 of the Youth Activity Promotion Act, is a national certification program that assesses program content, leader qualifications, and the safety of the activity environment. Through this system, a safe and reliable environment is provided for youth participation.

Participation records are systematically managed and can be utilized for career exploration, and insurance coverage is provided to prepare for any accidents that may occur during activities.

### Youth Activity Notification System

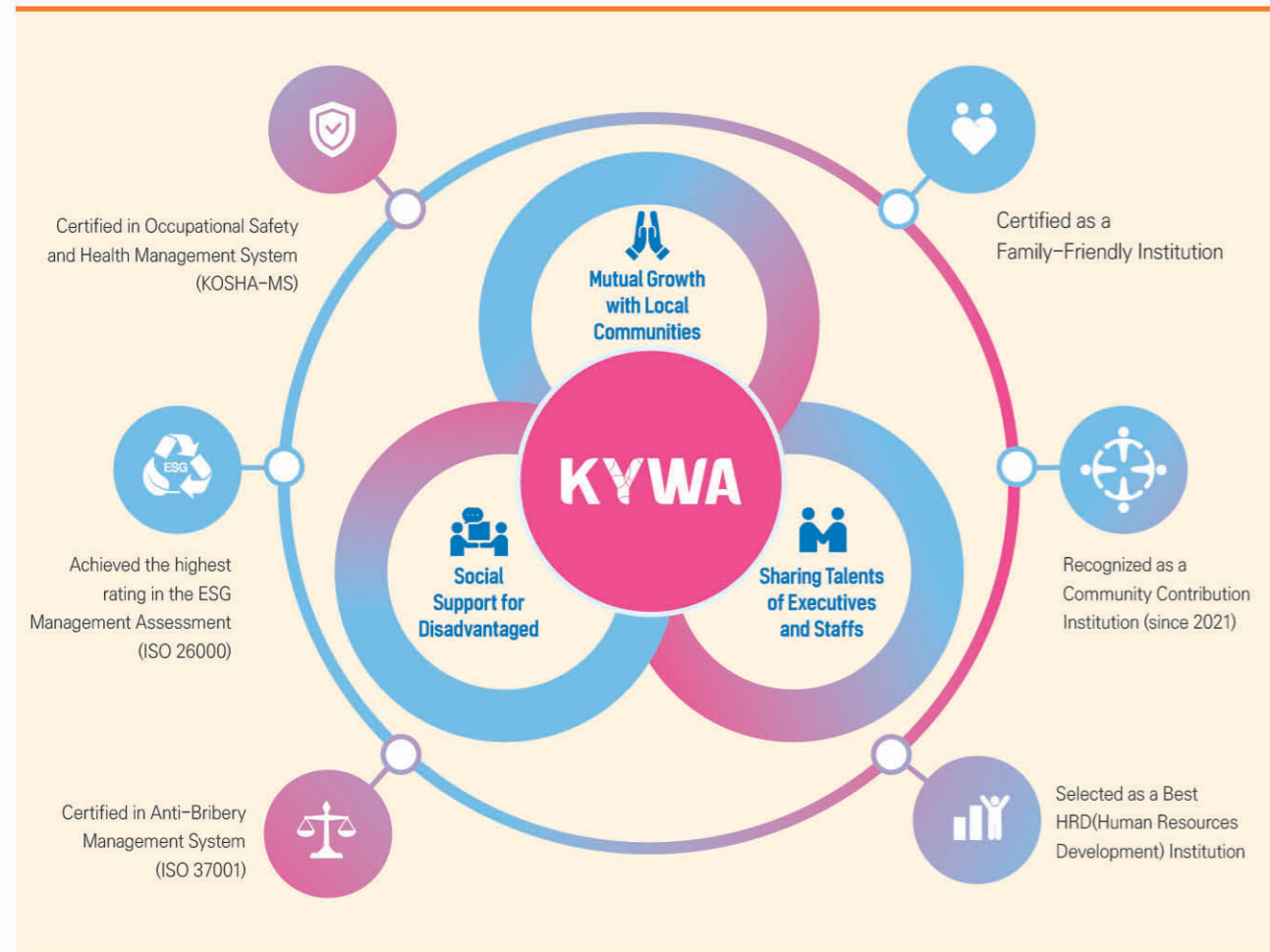
In accordance with Article 9-2 of the Youth Activity Promotion Act, this system requires organizations conducting youth training activities—such as overnight programs involving participants under the age of 19—to submit a prior notification to the relevant local government before the activity takes place.

Once the notification is approved, key information such as insurance coverage, details of program leaders, and an overview of the activity is made publicly available through the “e-Youth” platform, allowing anyone to access it. This system helps to ensure a transparent and safe environment for youth activities, enabling young participants and their guardians to engage with confidence.



# Social Value and Organizational Culture

\* KYWA is centered on youth and advances sustainable ESG management with trust, innovation, and growth as core values.



## Environmental

Youth Activities for a Cleaner Future (Active Implementation of Environmental Management)

1. Establishing a Climate Crisis Response System
2. Building an Eco-Friendly Operational Foundation
3. Enhancing the Efficiency of Energy and Resource Management Systems

## Social

Youth Activities for Coexistence and Collaboration (Building an Inclusive and Happy Society)

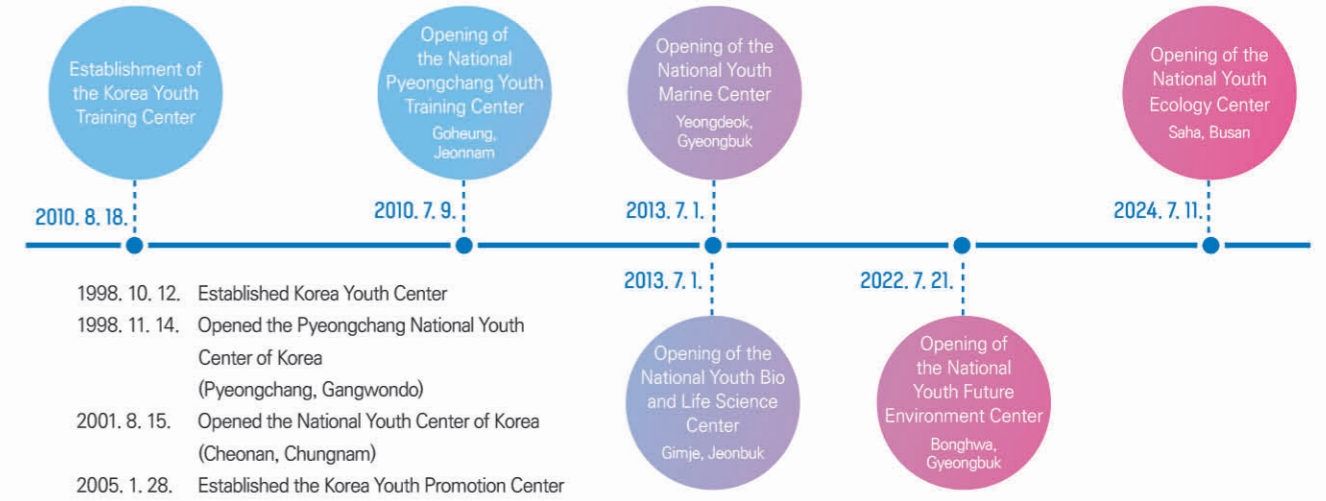
1. Addressing Social Issues and Creating a Cooperative Ecosystem
2. Advancing Disaster and Safety Management and Information Security Systems
3. Fostering a Positive and Supportive Organizational Culture

## Governance

Achieving Sustainable Management through Transparent and Rational Operations (Realizing Responsible and Transparent Management)

1. Strengthening ESG-Based Responsible Management
2. Advancing Ethical and Human Rights Management Systems
3. Promoting Mutual Growth based on Fair Trade

## Major Milestones



**Korea Youth Work Agency**  
47, Gyeonggidaero, Seodaemungu, Seoul, 03752  
T. 02-330-2800

**National Youth Center of Pyeongchang**  
108 Saeteomaeulgil, Yongpyeongmyeon, Pyeongchanggun, Gangwondo, 25316  
T. 033-330-0800

**National Youth Center of Korea**  
48 Seori 4 gil, Mokcheoneup, Dongnamgu, Cheonansi, Chungcheongnamdo, 31229  
T. 041-620-7700

**National Youth Bio-Life Center**  
421 Byeokgoljaero, Buryangmyeon, Gimjesi, Jeollabukdo, 54425  
T. 063-540-5600 F. 063-540-5603

**National Youth Future Environment Center**  
1466, Chunyangro, Chunyangmyeon, Bonghwagun, Gyeongsangbukdo, 36209  
T. 054-679-3000

**National Youth Ocean Center**  
911-44, Yeongdeokdaege-ro, Yeongdeok-eup, Yeongdeok-gun, Gyeongsangbuk-do, 36425  
T. 054-730-8500

**National Youth Space Center**  
200 Deokheungyangjokgil, Dongilmyeon, Goheunggun, Jeollanamdo, 59567  
T. 061-830-1500

**National Youth Ecology Center**  
43, Nakdongnamro 1233 gil, Sahagu, Busan, 49300  
T. 051-330-1000